

F.N.B. TOWER



501 FAYETTEVILLE



FOR LEASE

325,869 SF, **22-stories of Class A office**, retail & 239 luxury apartments

Dedicated **premium office lobby**

11,010 SF of **ground floor retail** 5,554 SF available

Signage opportunities with visibility on Fayetteville Street

Large, **flexible floor plates**; 10' finished ceiling heights; smart elevators

Direct access to **parking in the Charter Square deck** via dedicated elevator

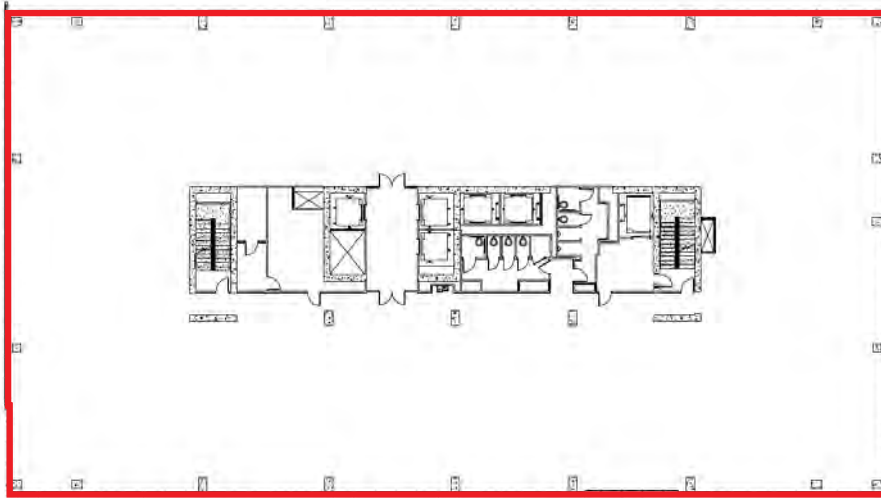
Restaurant space available

On-site management

24-hour on-site **security**

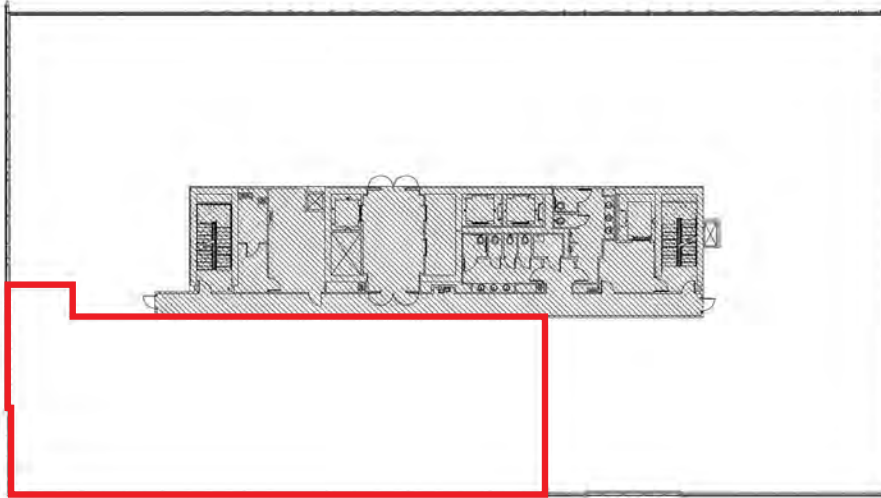
Adjacent to Raleigh Convention Center, Marriott City Center & Duke Energy Performing Arts Center

FAYETTEVILLE STREET

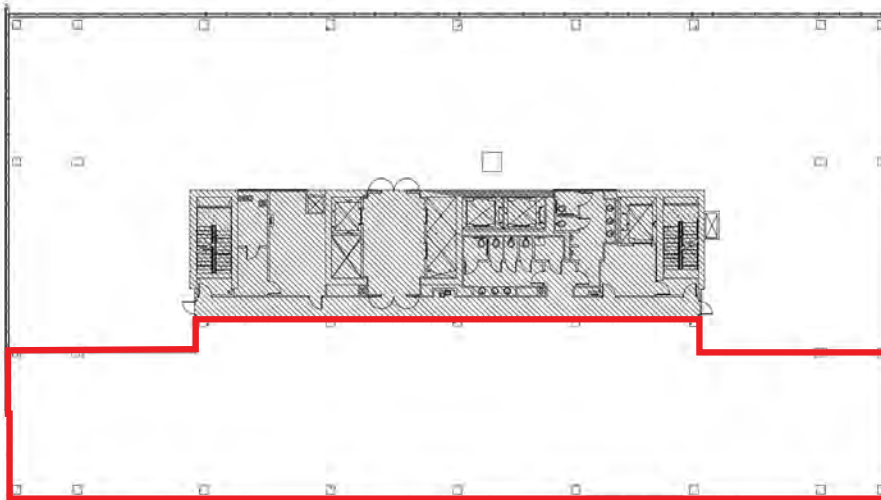


2nd Floor
*24,409 SF

3rd Floor
*24,127 SF

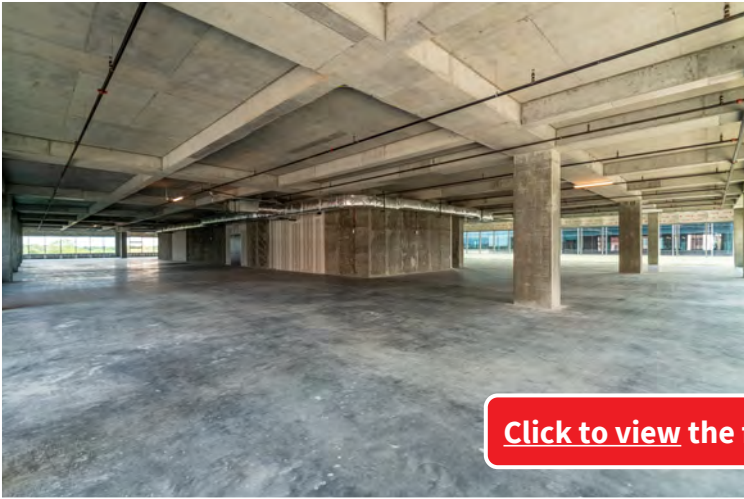


Suite 450
*7,540 SF



Suite 675
9,911 SF

***Floors 2 & 3 and Suite 450 can be combined for a total of 56,076 SF**



[Click to view the full floor virtual tour](#)

For more information, contact:
rduleasing@am.jll.com | +1 919 851 9111